

BEACH

TITLE IX

Equity & Compliance

Support Services and Resources

Discrimination, Harassment, Retaliation, Sexual Misconduct, Sexual Harassment, Stalking, Dating/ Domestic Violence, and Sexual Exploitation

Confidential Support

Location: Student Health Services

Email: advocate@csulb.edu | Phone: (562) 985-2668

Confidential Support- Students Only

Location: Student Health Services

Phone: (562)985-1732

Confidential Support- Students Only

Location: Brotman Hall 226

Phone: (562) 985-4001 (includes after hours crisis counseling)

Confidential Support

24 Hour Hotline: (877)943-5778 (Y-HELPS-U)

Confidential Support- Employees Only

Location: Foundation Building, Suite 151

Phone: (562) 985-7434 *By appointment

Confidential Support- Employees Only

Phone: (800) 367-7474

Support Services and Resources

Location: Foundation, Suite 160

Office Hours: M-F 8am- 5pm

Email: Larisa.Hamada@csulb.edu | Phone: (562) 985-8256

Confidential Support

Location: Foundation, Suite 160

Phone: (562) 985-8256

Email oecc@csulb.edu to request a Respondent Advisor

Support Services and Resources

Location: 1250 Bellflower Blvd. Long Beach, CA 90840

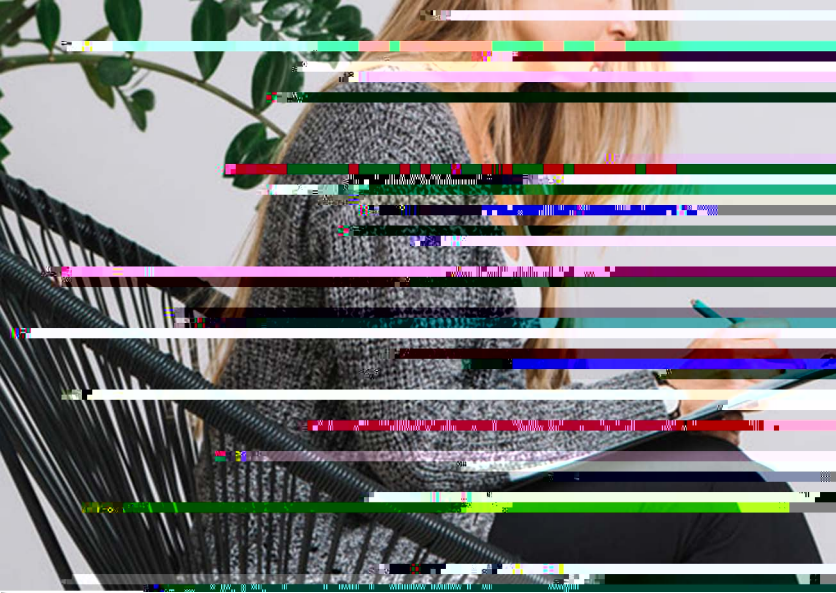
Phone: 911 or (562) 985-4101 (24 hour/non-emergency)

Support Services and Resources

Hours: Sun.- Thurs. 6:30pm-12am | Fri.- Sat. 5:30pm-9:30pm

Phone: (562) 985-4101 | "Blue Light"





Faculty & Staff Best Practices Title IX / DHR

- **Duty to Report:** Promptly report allegations of Discrimination, Harassment, Retaliation, Sexual Misconduct, Sexual Harassment, Stalking, Dating/Domestic Violence, and Sexual Exploitation to the Office of Equity & Compliance via the online reporting form, email or phone.
- **Practice Sensitivity:** Clarify to Students or Employees upfront that you will handle their concerns in a sensitive manner, but that you are not a confidential resource and have a duty to report Title IX or DHR matters to Equity & Compliance. Rights and resources will be provided.
- **Confidential Resources:** For Sexual Misconduct incidents, refer students and employees to on-campus resources, like the Campus Confidential Advocate (Advocate@csulb.edu) It